

Please welcome Nagomi's new member!



◆Kentaro Arai◆

Nice to meet you, everyone. I am Kentaro Arai, originally from Aizu. I started to work at Visiting Nurse Station Nagomi as a nurse in July. I had been interested in the activities of Nagomi for some time, and am very happy to join as a member of the team. I hope to learn many things in the fresh environment of Nagomi and grow as an individual. I will do my best to be of assistance to the residents of this area so that you are able to live with peace of mind. Thank you for your support in advance.

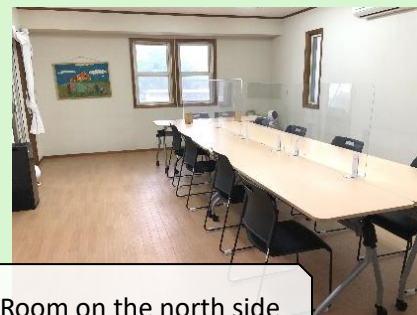


2nd floor of Mimami Soma Office has been renovated!

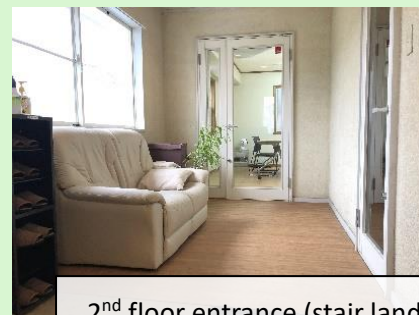
Second floor of the Minami Soma office has been newly renovated this fiscal year. The room on the northside which used to be carpeted was renovated to wooden floor. We also started to use the room located in the south side. It is now so much easier to clean the room on the north side as the wooden floor can be easily wiped clean. The entire room feels somewhat much brighter. We now try not to place many things in the room so that it is much easier to use for study sessions and meetings. (It's a pity that we did not take a photo of the room before the renovation...) The room on the south side is now used for various activities such as wood crafting and cooking. With this much larger space, we have been able to make a new start with our activities! (Suzuki, Administration)



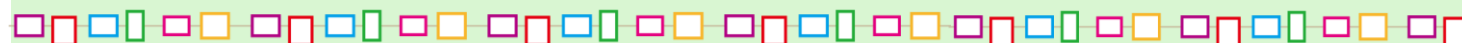
Room on the south side



Room on the north side



2nd floor entrance (stair landing)



Community Update

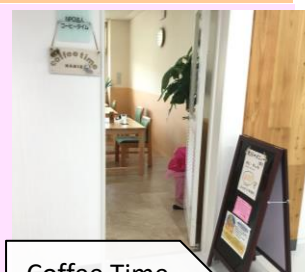
Visit to Fureai Center Namie!

We visited the Fureai Center Namie, which was newly opened on June 18. Three buildings stand adjacent to each other, housing playground equipment, bouldering space, library, gallery, social welfare council office, and home care support group office. A large athletic field is located right outside. What was most impressive was the library. The picture book corner offering a wide collection was a very relaxing space filled with warm colors.

"Coffee Time", a support for continuous employment - type B service, which had evacuated to Nihonmatsu after the Earthquake, was newly opened within the center's facilities, and was filled with customers. The center is located on the west side of Namie Station and is easily accessible. Please stop by when you visit Namie-machi. (Kanazawa, Outreach)



Fureai Center Namie



Coffee Time



Library



The NPO Association for Establishing a New Psychiatric Care, Health and Welfare System in Soso

Soso COCORO News Nagomi

32nd Issue September 2022

Published by: Public Relations and Membership Management Committee

URL: <http://soso-cocoro.jp/>

Facebook <https://www.facebook.com/cocoro.nagomi/>

Instagram https://www.instagram.com/nagomi_soso/

Twitter https://twitter.com/nagomi_soso



QR code for our website

Nagomi's General Assembly has been Successfully Held

The General Assembly of our organization was held on June 12, marking its 11th since the first being held in 2012. From the perspective of preventing infection of COVID-19, the assembly was held online, same as last year, and all propositions were successfully approved. Let us express our appreciation to all who participated and also to those who submitted their power of attorney. As the assembly was held online, we were able to hold discussions face to face also with the members in distant locations. It was very meaningful for us to obtain valuable opinions looking forward to the future of Nagomi. We will continue to do our best in our activities to promote healthcare, medical care, and welfare in the Soso area, while working on preventing infection of COVID-19 at the same time. (Tadano, Administration)



Nagomi's 10th Anniversary Event



The 10th anniversary event commemorating the foundation of our organization was held on June 12 after the General Assembly. The event, "Let's continue our conversation and stay connected", was held online. During the relay talk with various participants who have connection with our organization, we remembered sharing memories of "the days following the Great East Japan Earthquake till now" and received encouraging messages looking towards "the future". Professor Anzai of Teikyo Heisei University Graduate School provided us with an objectively quantified assessment of our activities and efforts and we once again told ourselves that we must continue to do our best. We also awarded the long-time service staffs of our organization. We promise to utilize the opinions, encouragement, requests, and expectations that we received during this event in our future activities. Thank you everyone for your participation. (Tadano, Administration)



※These photos were taken on a later date when we awarded the long-time service staffs. Thank you for 10 years of your continued service!! Looking forward to continue working with you!!



Care Center



As group activities for young people, Care Center organizes and carries out “Challenge Club”, fun events such as outings, and “Salon Bochi-bochi (little by little)”, support by providing place to stay, once a month respectively.

Challenge Club held a company visit tour to Ohgawara in May and visited the Ohgawara Natural Hot Spring “li-yu”. The members and staff all enjoyed delicious Tonkatsu (pork cutlet).



In July, we visited litate-mura and experienced blueberry harvesting. Thanks to the kindness of Ichizawa-san, who used to run Aguri Coffee Shop in litate-mura before the Earthquake, we were able to enjoy delicious blueberries. Coffee Shop Aguri has relocated to Fukushima City after the Earthquake, but in the location where Aguri used to be, a bagel shop, “Mura Café 753 (Nagomi)” now offers Aguri’s coffee. Please stop by when you visit litate-mura. Our thanks to everyone who cooperated in these events. (Adachi, Care Center)



Visiting Nurse Team

We took a walk in a park in Soma City that we visited for the first time, together with our user for a change.

There is a song titled “Our home town Soma” sang by the singer, Muneyuki Sato. A stone monument with the lyrics of this song engraved is located in this park. We were so surprised to hear the song being automatically played when we came near the monument.



Our user repeatedly said that “It feels so good to be outdoors!” and we enjoyed our walk talking to each other. It turned out to be a nice change of pace. (Kosahara, Visiting Nurse)



Nagomi CLUB Team

As soon as the month of July started, the Tanabata festival naturally became one of the top topics at the Local Activity Support Center Nagomi CLUB and we prepared the decoration for the festival.

Once the bamboo tree was prepared, we started to decorate the bamboo pole. When the decoration was finished, we decided to write our wishes on strips of paper to hang on the bamboo.

“Our wish is exactly the same”, “This is what I am going to write as my wish”. We were not able to stop smiling when we found out that almost all of us wrote the same wishes. The strips of paper written by us staff were also hang on the bamboo tree together with others. Let’s hope that everyone’s wish comes true. (Abe, Nagomi CLUB)



Outreach Team

On April 8, one of the Outreach Team members who had dedicated himself for a long time left the team. He had been with us from the time the team started its activities. There were so many words of praise such as “was always so accommodating and able to handle anything”,



“hard worker and very reliable and useful”, “played the most active role during important and most difficult times”, “never complained and continued to work even when being covered by dirt.” Especially when we had to transport bicycles and large number of items, he performed at his full potential and helped create an environment where the staff was able to work to the best of their abilities. Thank you so much for your hard work! Thank you Acty, the mini truck! (Kanazawa, Outreach)




We are inviting you to become a new Nagomi Supporter Member (member of the NPO)!

【How to become a new member】

Please send your application as follows and make payment of your membership fee by postal transfer.

1. By Fax or postal mail: Please send the following information to the below fax number/address; type of member (regular member or supporting member), name, address, company or organization name (occupation), phone number, e-mail address.
2. Via our website: <http://soso-cocoro.jp/>

Click  [★ 会員になる](#) button on our website and fill out the application form.

We are now authorized as a Certified NPO Organization. Membership fees and donations made to our NPO are now eligible for income tax exemption applied to donations. By choosing between tax deduction for donations (income deduction) and tax deduction and filing for final tax returns, you will be able to receive income tax exemption. Please refer to our website for details.

1. Regular Member Annual Membership Fee: 10,000 yen
2. Supporting Member Annual Membership Fee (per unit): 3,000 yen
3. Donations

To pay your membership fee/to donate: Postal Transfer
Account number: 02260-0-126825
Account name: The Association for Establishing a New Psychiatric Care, Health, and Welfare System in Soso

We regularly send newsletters and local information about Soso area to our members. We look forward to your participation!

【Contact】 Nagomi Soma Office
1-2-8 Okinouchi, Soma City, Fukushima Prefecture
976-0016
Tel: 0244-26-9753
Fax: 0244-26-9739
E-mail address: nagomi@soso-cocoro.jp

