



The Association for Establishing a New Psychiatric Care,  
Health and Welfare System in Soso

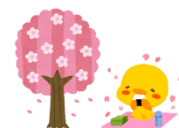
## Soso Cocoro News Nagomi

16<sup>th</sup> Issue April, 2017

Published by KCN Newsletter Editorial Team

URL: <http://nagomi.soso-cocoro.jp>

Facebook: <https://www.fb.me/cocoro.nagomi>



### Fiscal Year 2017 General Assembly & Nagomi's 5<sup>th</sup> Anniversary Thanksgiving Festival!

🍀 **Date :** June 4<sup>th</sup> (Sun), 2017 11 am - 12 pm General Assembly  
1 pm - 3 pm Anniversary Festival

🍀 **Venue :** Hamanasu-kan (Soma City General Welfare Center)



*In January, 2017, Nagomi has reached its 5<sup>th</sup> anniversary. We would like to invite our friends and supporters to our anniversary event to show our appreciation to all. Please come and join us!*

### The Situation in the Soso Area

The evacuation order for Emergency Evacuation Preparedness Zone and residential restrictions due to the Fukushima Daiichi Nuclear Power Plant accident were lifted in Namie-machi, Yamakoya (Kawamata-machi) and Iidate-mura on March 31<sup>st</sup> and in Tomioka-machi on April 1<sup>st</sup>. Many people are expected to return from outside Fukushima Prefecture, and this will require us to address more complicated issues. We hope to keep up with our mission to deal with emerging issues concerning mental and physical health in the community. We appreciate your continued support. (Yonekura)



Tea party in Namie-machi,



### Minamisoma Office has transferred !

*Minamisoma Office has transferred to a new location since April 26<sup>th</sup>. Feel free to visit us when you are in the area. (Adachi)*

*New Address: 3-2-7, Minami-machi, Haramachi-ku, Minamisoma-shi  
Phone Number: +81 (0)244-26-9353 (same as before)*



**Dear Members, kindly deposit membership fee for fiscal year 2017.**



1. Regular member Annual Membership Fee 10,000 yen
2. Supporting member Annual Membership Fee 3,000 yen

#### 【How to apply】

- Write the following information: regular member or supporting member, address, affiliation, occupation, phone number, e-mail address:
- Send it to us by postal mail or by fax. See the contact information below.

You can also apply through our website. <http://soso-cocoro.jp/> (in Japanese only)

#### How to Pay Your Fee: Postal Transfer

Account Number : 02260-0-126825

Account Holder: the Association for Establishing a New  
Psychiatric Care, Health and Welfare  
System in Soso

#### Contact: Nagomi Soma Office

1-2-8, Okinouchi, Soma City, Fukushima  
Prefecture 976-0016  
TEL: 0244-26-9753 FAX: 0244-26-9739  
E-mail: [nagomi@soso-cocoro.jp](mailto:nagomi@soso-cocoro.jp)

### We are recruiting new members !

*We regularly send out newsletters and local information to our members*



※ A deposit slip has been enclosed with this newsletter for members who have not paid their membership fee.  
Kindly ignore the slip if you have already made the payment before receiving this newsletter.

## Welcome, New Staff Members !

### ◆WATANOBE, Keiko◆

I have been working for the Community Activity Support Center Nagomi CLUB since last November. I was born and raised in Soma. There was a time when I left Fukushima, but I feel like I am a trueborn Soma woman and love the city very much. I am still new in the field of social work, and there are so many things I need to learn. I am the youngest staff member in Nagomi, but I will do my best to grow so that I can be of some help to the community.



### ◆KOSAHARA, Noritsugu◆



I have returned to my hometown Minamisoma from Kitakata, Fukushima, and I have been working at the Soma Office since this April. I used to play baseball in high school. Although I was not a leading player, I was a pitcher. Now, I am in my forties and love playing sports. If I have the chance, I would like to play baseball again, although it might be a struggle physically given my age... I will do my best to get used to the new work environment so I can contribute to the community soon.

### ◆YANAGISAWA, Chihiro◆

Hello, everyone! I joined the Outreach Program in April this year. I am a nurse and I grew up in several prefectures in Eastern and Central Japan. I am a graduate of the School of Nursing in Fukushima Medical University. I have returned to live in Fukushima for the first time after more than 10 years of absence. When I was a student, I belonged to a mountain trekking club, and hiked in the mountains in Fukushima, such as Reizan, Adatarasan, and Oze. I am looking forward to enjoying the beautiful sceneries of each season, reuniting with old schoolmates, and making new friends in Fukushima.



## Activity Updates

### Soma Wide Region Mental Care Center Nagomi

The functions of the mental care center have been centralized in Minamisoma Office since January 2017. In addition to Shinchi-machi, Soma-shi and Minamisoma-shi, our service area now includes Namie-machi and Iidate-mura. Now, six years have passed since the disaster, and people are slowly returning to their communities. Utilizing the local network which we have established, we will continue serving the community. (Yonekura)



Mental Care Team



Visiting Nursing staff

### Nagomi Visiting Nursing Station "Liveliness"

Our nursing station has reached its 4<sup>th</sup> anniversary. The number of staffs has increased from two full-time and one part-time staff members to four full-time staff members. Together with new staff members, we will continue serving the community to achieve our motto "to support our clients become comfortable with who they are". Feel free to visit our office and talk to us! (Sato)



Outreach Team

### Local Activity Support Center/Consultation Support Office Nagomi CLUB

Nagomi CLUB has reached its third year of operation. Now we are a team of four. Kudo has transferred to the Minamisoma Office, and Watanobe has recently joined us. Although we only have a small number of staff members, we will do our best to respond to the needs of our clients and work closely with them. We would appreciate your continued support. (Otani)



Nagomi CLUB Staff